

技术参数

声光介质	TeO2	
声速	.66 mm/μs	
通光孔径*	1.75 mm 'L' X	1.75 mm 'H'
中心频率	30 MHz	
射频带宽	25 MHz @	-7 dB Return Loss
输入阻抗	50 Ohms Nominal	
驻波比	2.5 :1 Max	
波长	680-1300 nm	
插入损耗	5 % Max	
单表面反射率	2 % Max	
反射膜镀膜标准	MIL-C-48497	
光功率密度	<250 W/mm ²	
消光比	1000 :1 Min	
偏振	Perpendicular ° To Mounting Plane	

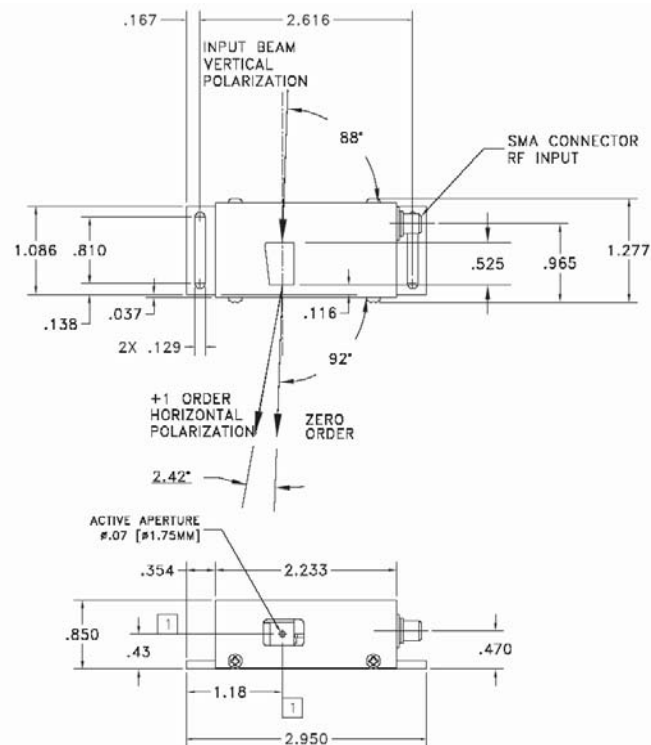
波长性能参数

波长(nm)	680	990	1300
饱和射频功率 (W)	<1	<1	<1.2
布拉格角 (mr)	34.8	34.8	34.8
光束分离角 (mr)	69.6	69.6	69.6

光束直径性能参数

光束直径(μm)	980	980	980
光束直径(nm)	680	990	1300
衍射效率(%)	90	90	80
上升时间(ns)	991	991	991
射频频率(MHz)	39.9	27.4	20.9
色散角扩展系数 (μrad/nm)	60	41	31

外形尺寸图:



NOTES: (UNLESS OTHERWISE SPECIFIED)
 1 CENTER LINE OF ACTIVE APERTURE.

Notes:

Frequency Tuning to control output diffraction angle.
 Beam pointing error +/-40urad change in RF Power(i.e. .2-1.2W).
 Ambient Operating temperature 20-30C.
 Maximum RF 2.5W
 Beam Separation 42mrad

THIS DOCUMENT IS THE PROPERTY OF GOOCH AND HOUSEGO. IT IS NOT TO BE REPRODUCED OR DISCLOSED IN WHOLE OR IN PART OTHER THAN BY EMPLOYEES OF GOOCH AND HOUSEGO AND ITS CONTRACTED REPRESENTATIVES AND DISTRIBUTORS. ANY EXCEPTION REQUIRES THE WRITTEN CONSENT OF AN AUTHORIZED REPRESENTATIVE OF GOOCH AND HOUSEGO.



Document
 09/20/2024
 Control

TOLERANCES: .XX ± .01 .XXX ± .005	DR	T. NG 9/19/2024	Gooch & Housego		
MATERIAL:	CHK		DESCRIPTION: AOMO 3030 .68-1.3um, Shear		
FINISH:	APP		PART NUMBER: 97-03358-03	REV: 3	SHEET 1 OF 1
	APP				

*通光孔径: 性能指标所适用的孔径范围